

- **20 years of science-based reliability in clinical use since 1995**



WINSIX® Implant System was firstly introduced into the market in 1995 with the aim to offer to Professionals the right solutions and help their Patients with minimally invasive, fast and economical rehabilitations on implants.

Today – after 20 years of continuing activity deeply involved in Scientific Research and Technological development – **WINSIX®** Implant System has become a reference brand for thousands of Dentists in the world who appreciate its efficacy, esthetic and functionality.

Technological development within **WINSIX®** is based on the assumption of creating constant synergies among different surgical instruments, implants and prosthetic components in order to make rehabilitations on implants easy and successful even for those Dentist at their start up.

Moreover, **WINSIX® SYSTEM** is today a reference point for professional Training activity in Implantoprosthesis thanks to the cooperation with the most prestigious Universities, where worldwide appreciated experts teach in different and qualified contexts, including Hands on Training and Live Surgery.

WINSIX® INTERNATIONAL TRAINING



WINSIX® Hands on Training at Boston University



Hands on Live Surgery, tutor assisted

GROWING FAST

Strong of the Italian know-how for Esthetic dentistry and for innovation, and thanks to its commercial dynamism, **WINSIX®** is attracting the interest of a growing number of Dentists around the world, thus setting a relevant market opportunity with a fast spreading international sales network.

For commercial purpose contact:

BIOSAF IN

Tel. +39 071.2071897 –

exportmarketing@winsix.eu - www.winsix.eu –

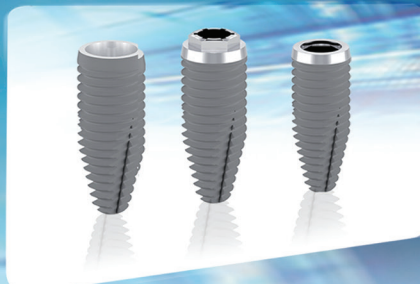
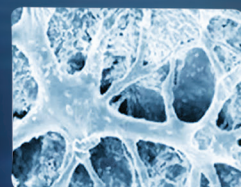
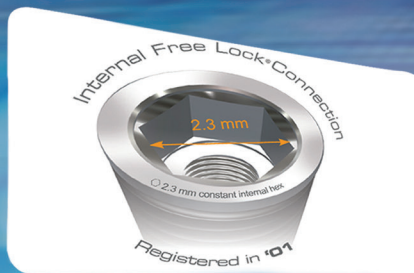
Information website for the Patient:

www.implantologiawinsix.com

AppStore: WINSIX 1995



Winsix®
performing implant system



Just Innovate.

JUST A CAB® FOR A JUST ON FOUR

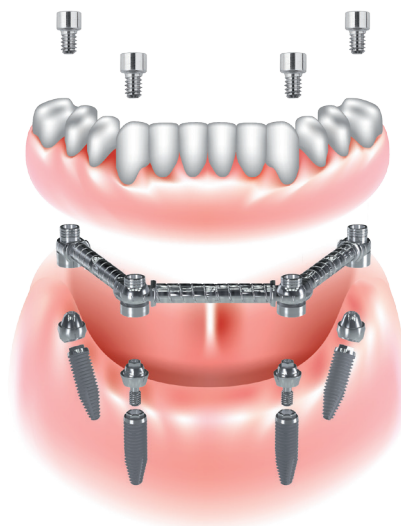
An innovative oral device for the rehabilitations of fully edentulous arcades just on 4® implants.

The innovative WINSIX® CAB® device - *Clip Abutment Bar* - specifically dedicated to multi-unit screw-retained rehabilitations on bar, is attracting the interest of a growing number of Dentists around the world, thus able to offer their Patients fast and economic implant supported rehabilitations just on 4 implants.

The CAB® device associated to innovative surgical Techniques and to the new Torque Type® Implants (either with internal or external Hex connection), is easy to be applied also for those dentists at their professional start up, helping fast and successful rehabilitations.



CAB® has obtained the International Patent PCT/EP2011/072448 as innovating original device. CAB® is worldwide appreciated, especially when associated to the application of Teeth Just on 4®/Teeth Just on 6® surgery techniques when immediate implant loading is possible.



MEET US at:

AEEDC Dubai, United Arab Emirates - 17/19 February 2015 - HALL 8 Booth 42

Our international sales network is growing fast. To be part of it as a dealer, please contact exportmarketing@winsix.eu

more information and details on products and training on www.winsix.eu

WINSIX®
1995 • 2015
20 YEARS



produced by
BioSAFin